

iPad 17:17 16%
Notes
Type out your message or tap a word from the prediction bar to enter it into the message window

wind windows
window windowed



Q W E R T Y U I O P
A S D F G H J K L return
Z X C V B N M ! , ?
123 123

iPad 17:17 16%
Notes
Type out your message or tap a word from the prediction bar to enter it into the message window

wind windows
window windowed



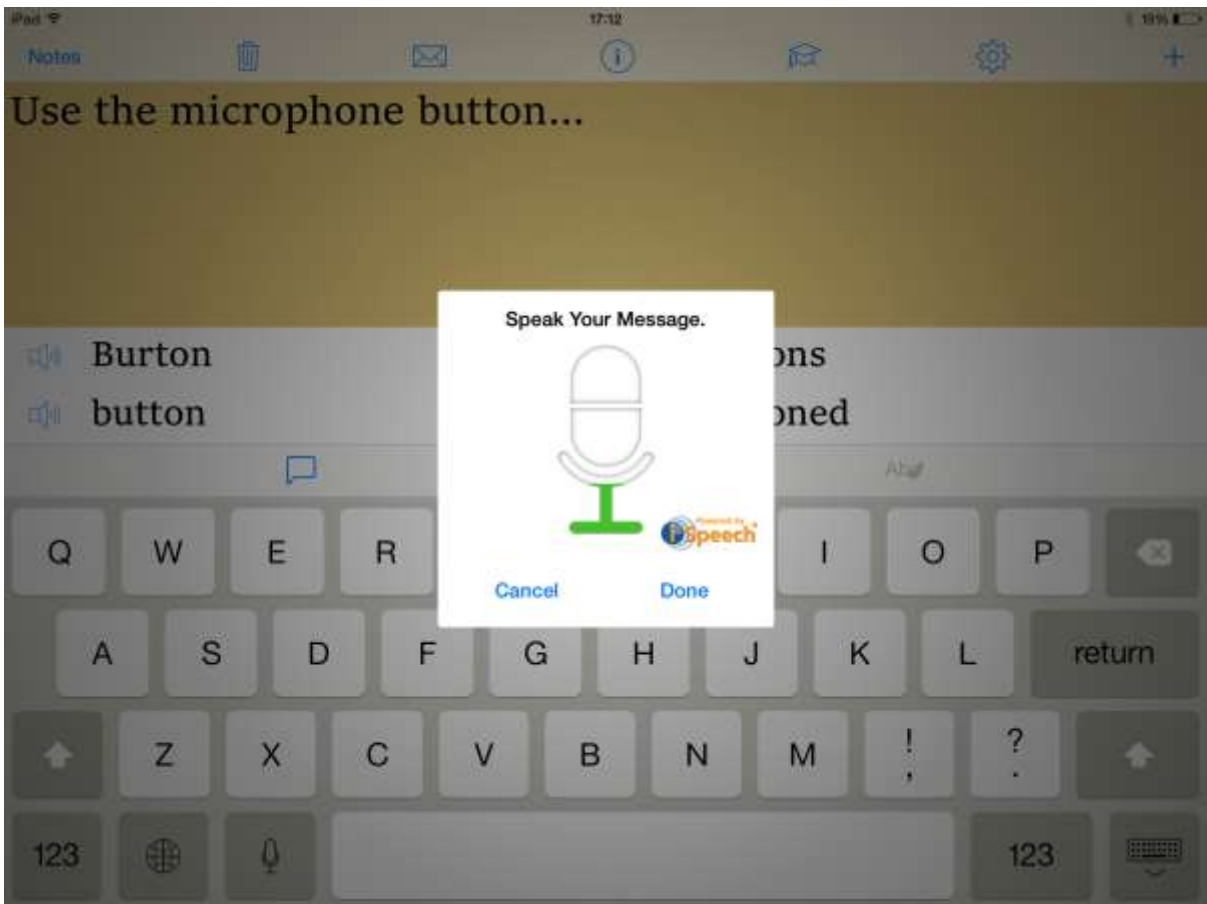
Q W E R T Y U I O P
A S D F G H J K L return
Z X C V B N M ! , ?
123 123

Use the speak button next to the word predictions to hear them spoken out loud.



Use the microphone button...





Use the microphone button... To speak the words you want to type. This speech recognition tool will let you dictate a message.

speech

speechless

speeches

speech's



Notes 17:15 18%
The splel chek will only appear hilihgted once you have made a misteak |

hailing

holing

haling

hilt



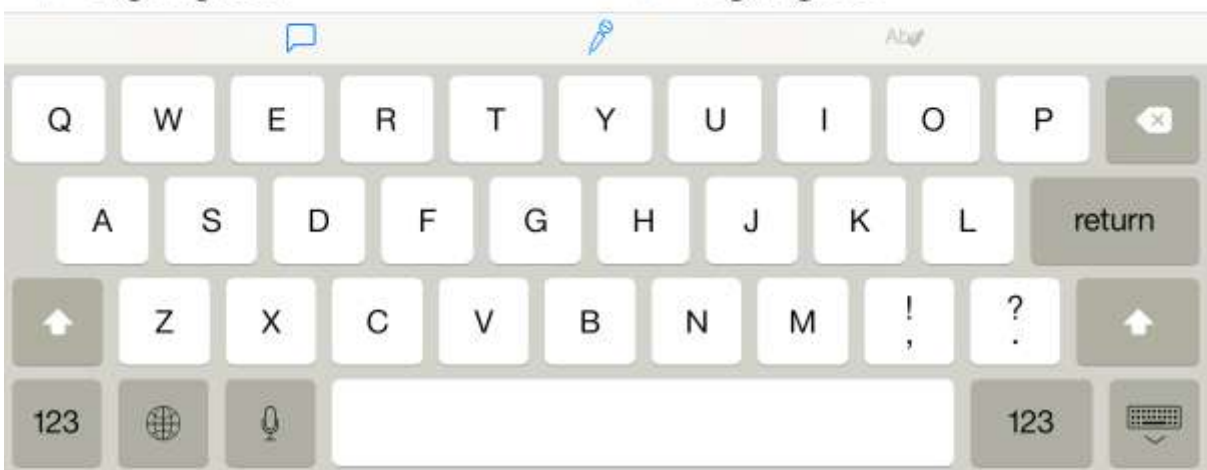
Notes 17:16 17%
The spell check will only appear highlighted once you have made a mistake |

highlighter

highlights

highlighted

highlighter





Tap the notes button to see previously saved notes.

Notes
noted

Motes
noter

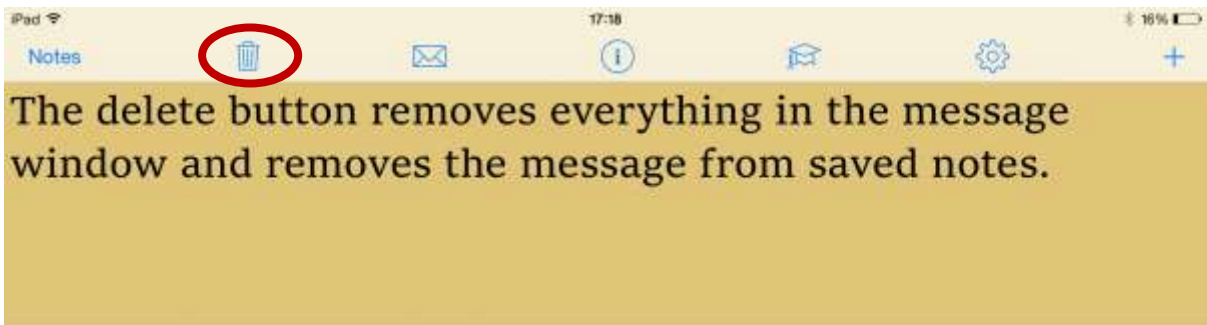


Tap the notes button to see previously saved notes.



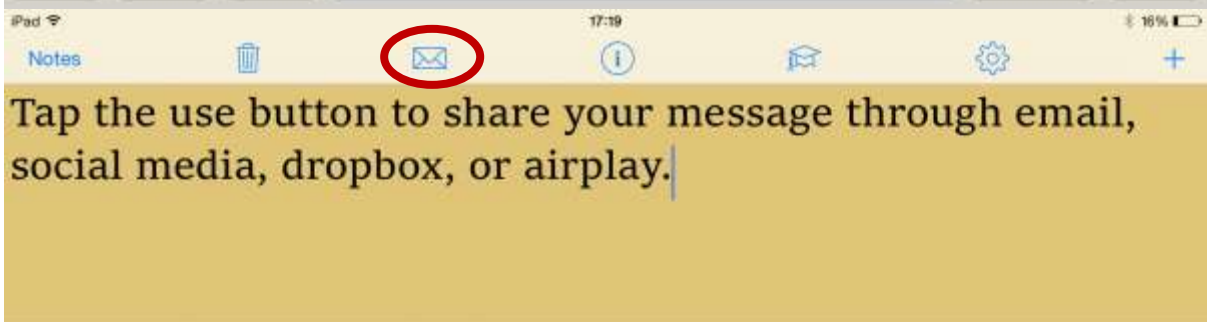
Motes
noter





Notes
noted

Motes
noter



airplays
airplay

airplanes
airplane's



iPad 17:20 16%

Notes [trash] [mail] [info] [scholar] [settings] [plus]

Tap the info button for a quick reminder of the main App buttons.

[speaker] burtons

[speaker] buttony

[speaker] buttons

[speaker] muttons

[comment] [pencil] ALW

Q W E R T Y U I O P [delete]

A S D F G H J K L [return]

[arrow up] Z X C V B N M ! , ? [arrow up]

123 [globe] [microphone] [text field] 123 [keyboard]

iPad 17:20 16%

Notes [trash] [mail] [info] [scholar] [settings] [plus]

Tap the scholar button for a subject specific dictionary.

[speaker] Dictionary

[speaker] dictionary's

[speaker] dictionary's

[speaker] dictional

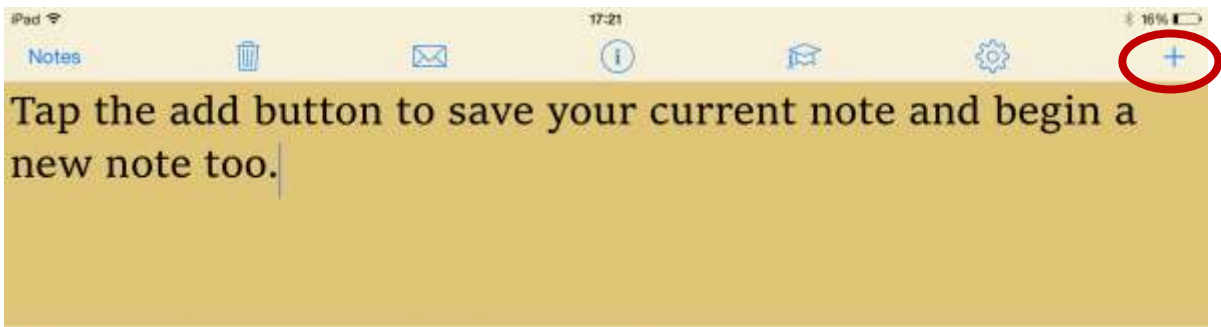
[comment] [pencil] ALW

Q W E R T Y U I O P [delete]

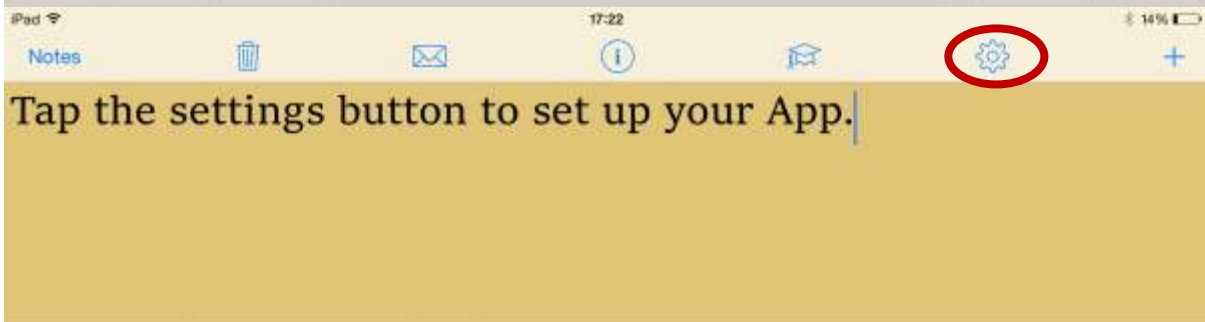
A S D F G H J K L [return]

[arrow up] Z X C V B N M ! , ? [arrow up]

123 [globe] [microphone] [text field] 123 [keyboard]



too tools
took tool



application apparent
approach approval



If you have dropbox set up on your app then you can turn on dropbox sync. This will automatically save all your notes to dropbox so that they can be accessed remotely.

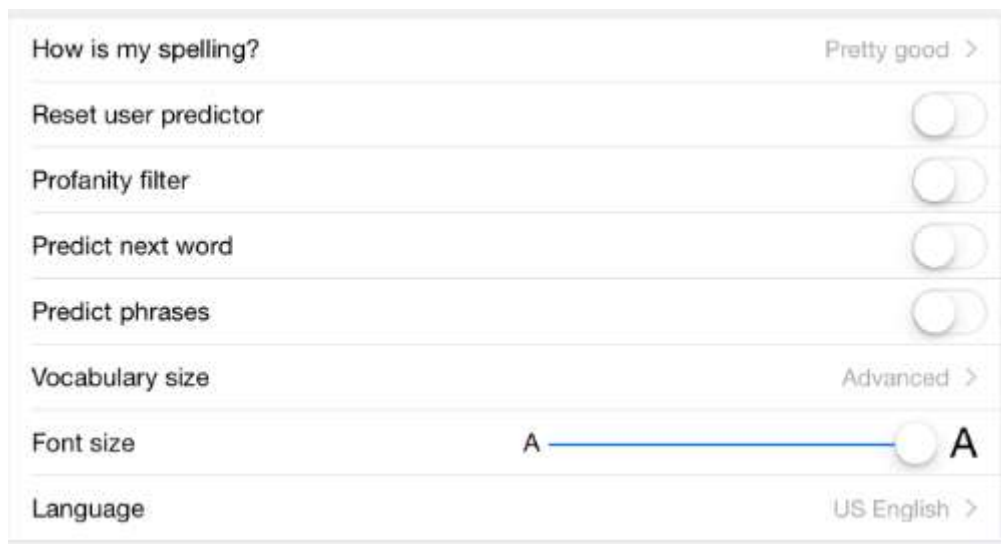


In the Writing settings you can set up the word prediction bar to meet your exact requirements. You can change the level of spelling help you get, turn the profanity filter on or off, choose whether a the app predicts your next word before you've started typing.

Turn Predict phrases to on if you want the app to show predictions for a group of words at a time (type "Ho..." for example and it will predict "How are you?" at once).

Change vocabulary size depending on the range of words you use. Smaller vocabulary sizes focus the app to look for more common words, the large vocabulary size allows the app to look for more obscure words.

Change the size of the font as it appears in word prediction and the message window with the font size slider, and set a different dictionary language through Language settings.



Change the pace at which the app's voice reads words using the Reading speed slider.



In Display, press the Theme button to choose from a list of app themes. This will change the colour of the message window as well as the font type.

Wheat	Typ-O	✓
Sage	Typ-O	
Cotton	Typ-O	
Coal	Typ-O	

If you'd rather have word predictions appear next to the word you're typing, then you can change this in Display → Show Predicted Words.

Where I write

Above the keyboard ✓

